

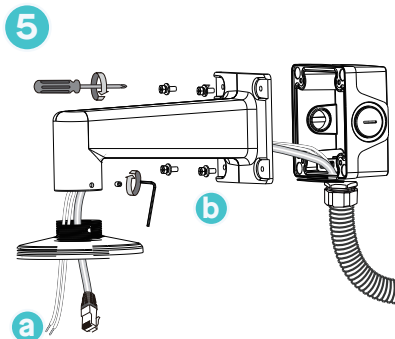
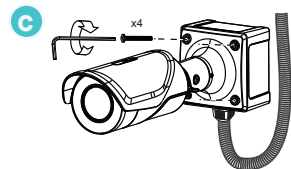
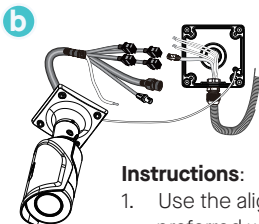
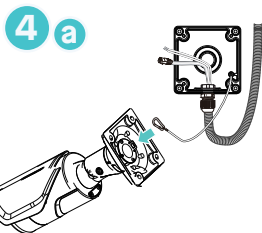
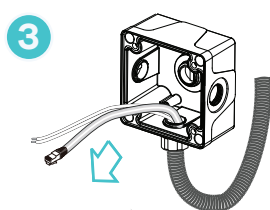
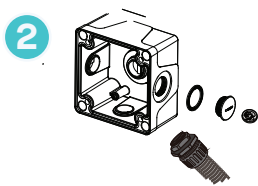
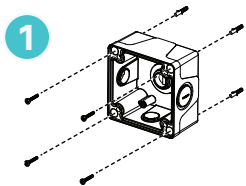


samsara

## ACC-SC-MNT-J1

# Camera Junction Box Installation Guide

For more information please visit the Connected Sites Knowledge Base  
at [samsara.com/support](https://samsara.com/support).



### Instructions:

1. Use the alignment stick to drill holes into the preferred wall position. Cables can be passed either through the wall and the back of the junction box or through the bottom opening.
2. A 3/4" conduit is required for routing cables outdoors or in a wet environment.
3. Install the cable gland and pass the cable through the junction box
- 4a. For the SC21 Bullet Camera, connect the tether wire between camera & junction box.
- b. Connect all other wires to the camera.
- c. Secure the camera to the box.
- 5a. For the SC11 Dome Camera, route the cables through the bracket, arm mount, and mounting adapter and through to attach to the dome camera.
- b. Secure the bracket to the junction box and finish following the instructions on the ACC-SC-MNT-A1 Arm Mount Installation Guide.