

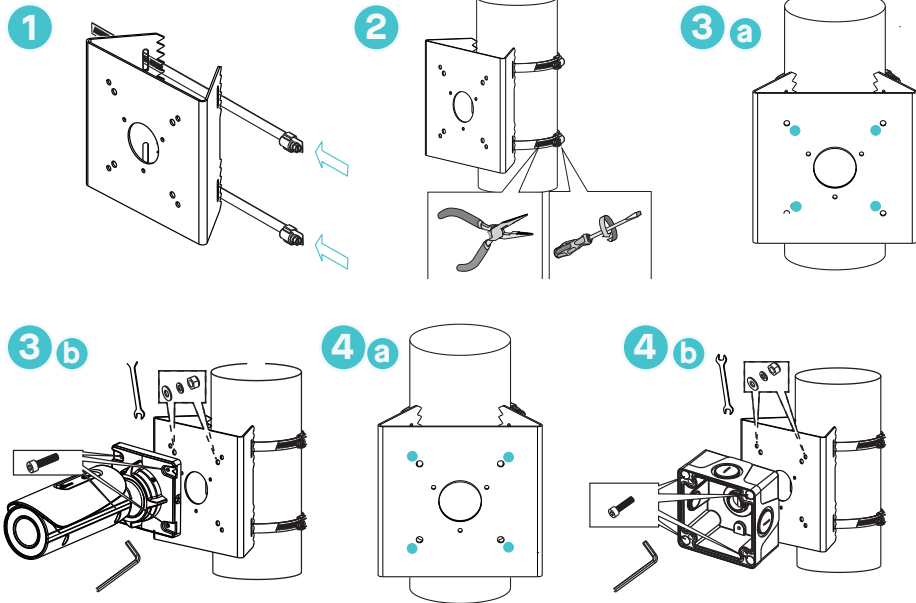


samsara

ACC-SC-MNT-P1

Camera Pole Mount Installation Guide

For more information please visit the Connected Sites Knowledge Base
at samsara.com/support.



Instructions:

*Note: the pole mount bracket is meant to accommodate a pole 90-152mm in diameter.

1. Pass the stainless steel straps through the bracket and around the pole.
2. Tighten the straps using a pincer plier and flat blade screwdriver.
- 3a. The 4 screw holes in the center can be used for monting the SC21 Bullet Camera.
- 3b. Secure the bullet camera directly to the pole mount using M6 screws.
- 4a. The 4 screw holes at the edges are used for mounting a junction box that connects either the SC21 Bullet Camera or SC11 Dome Camera.
- 4b. Secure the junction box with M5 screws, washers and hex heads.
5. Finish following the instructions on the ACC-SC-MNT-J1 Junction Box Installation Guide.