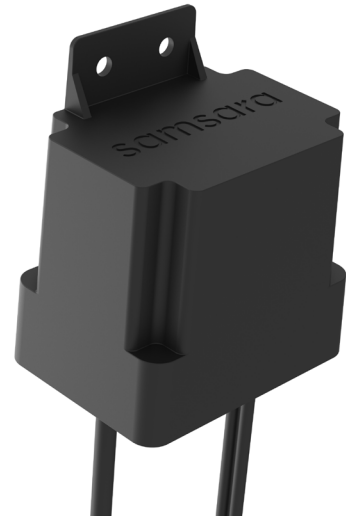


# Engine Immobilizer

## Data Sheet



### OVERVIEW

The Samsara Engine Immobilizer allows fleet administrators to remotely disable or enable the ignition of any vehicle from the Samsara dashboard in the event of an emergency.

When installed and activated, the Engine Immobilizer will not allow the engine to start, preventing the vehicle from moving.

With its discreet design and immediate response, the Engine Immobilizer is ideal for preventing vehicle theft, recovering stolen assets, and managing access to vehicles.

### HIGHLIGHTS

- Prevent a vehicle's engine from starting with a click from the Samsara dashboard
- Easily hide installation from plain view with its black finish and small size
- Operates in all types of conditions through ruggedized design

Requires Samsara Vehicle Gateway  
Software included in VG license, sold separately

### SPECIFICATIONS

- **Remotely Disable and Enable Vehicle Ignition:** With the device installed in the vehicle, navigate to the Fleet Overview page within the Samsara dashboard and click on the vehicle you would like to disable. Click the icon with three dots, and select Disable Vehicle. To re-enable the vehicle, click Enable Vehicle.
- **Simple and Flexible Installation:** The Engine Immobilizer is installed by interrupting the vehicle's starter line and is powered by a USB connection to the Samsara Vehicle Gateway. Each cable is one meter long to make it easy to install in any vehicle.

**MATERIALS** Polycarbonate

**SIZE** 59mm x 44mm x 68.5mm

**WEIGHT** 120g

**USB CABLE LENGTH** 1m

**INTERRUPT CABLE LENGTH** 1m

**TEMPERATURE RANGE** -40°C to 85°C

**INTERRUPT LINE VOLTAGE RANGE** 12V to 24V

**POWER VOLTAGE** USB 2.0 (5V)