



SAMSARA FOR FLEETS

Construction



SAMSARA FACTS

10,000+ customers
worldwide

200,000 new devices
added annually

Offices in
San Francisco,
San Jose, Atlanta,
and London

A Complete Fleet Management Platform for Construction

Samsara offers a new generation of connected sensor technology that helps construction companies safely deliver projects under budget and on time. With the ability to track everything from backhoes to cranes, monitor time on site, detect theft, and improve safety, Samsara offers end-to-end visibility into projects—all in one easy-to-use platform.

Construction companies trust Samsara's technology to drive business outcomes: to improve billing, to increase operational efficiency, and to deliver a higher level of customer service.



OPERATIONAL EFFICIENCY

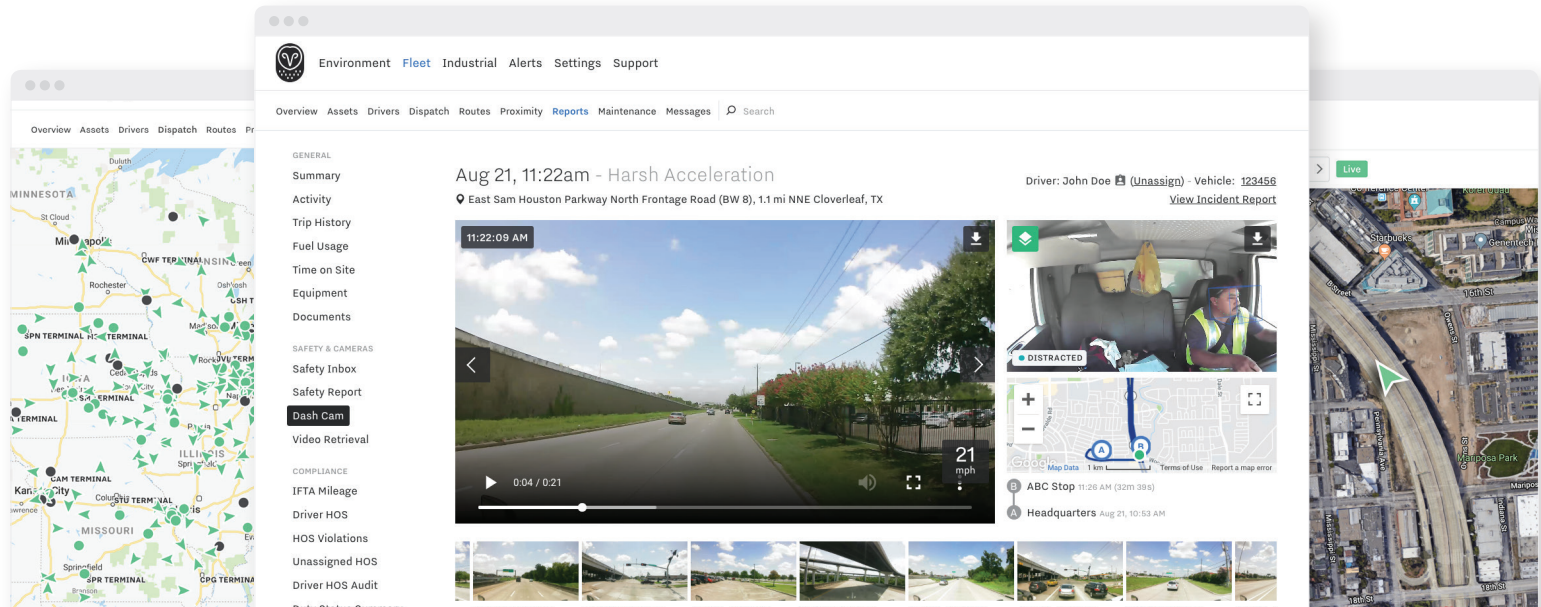
Real-time data on equipment location, utilization, time on site, and maintenance streamlines your operations.

FLEET SAFETY

HD dash cams automatically upload footage of critical events, while AI-powered reports expedite reviews for exoneration or coaching.

COMPLIANCE

An easy-to-use dashboard and driver app, as well as real-time alerts, make it simple to meet the requirements of the ELD mandate.



CASE STUDY

Ghilotti Bros., Inc.

Bay Area construction company relies on Samsara for innovative ways to streamline operations and improve safety

With hundreds of trucks and pieces of equipment to keep tabs on, Ghilotti Bros. values having an integrated solution that provides new levels of visibility into their business. The team uses Samsara to track equipment spread out across multiple job sites and to monitor vehicle and asset utilization. Automatic reminders about upcoming maintenance needs allow the team to customize service schedules based on the expected wear and tear on the equipment.

But for Ghilotti Bros., the platform's safety tools top the list of Samsara benefits. Ghilotti Bros. tracks safety performance over time, currently clocking in at 375,000 man-hours safe, accident and injury-free.





140
VEHICLE GATEWAYS

20
ASSET GATEWAYS
provide real-time location visibility

375,000
HOURS ACCIDENT
& INJURY FREE

PROTECT YOUR DRIVERS

A Safer Fleet

Samsara's safety solution empowers Ghilotti Bros. in their mission to create an accident-free work environment. By detecting and capturing information on driver behavior, such as speeding incidents and harsh driving events, Samsara's platform gives the company the information it needs to coach their drivers on safety best practices.





“

At Ghilotti we view our team
as our family, and Samsara keeps
our family safe.”

GWEN MAYER

Administrative Manager, Ghilotti Bros., Inc.

HARDWARE

Equipment, Vehicles, and Assets



VG Series

GPS Gateway with WiFi Hotspot

Vehicle gateways provide live vehicle location, engine diagnostics, and harsh braking and acceleration data, along with a WiFi hotspot for in-cab productivity.



CM Series

High-Definition AI Dash Cams

Front- and dual-facing cameras with embedded AI detect distracted driving, tailgating, rolling stops, and more.



AG24

Asset Gateway for Powered Assets

Asset gateways offer live GPS tracking for powered assets, show engine hours and equipment utilization rates, and feature a solar powered battery backup.



AG45

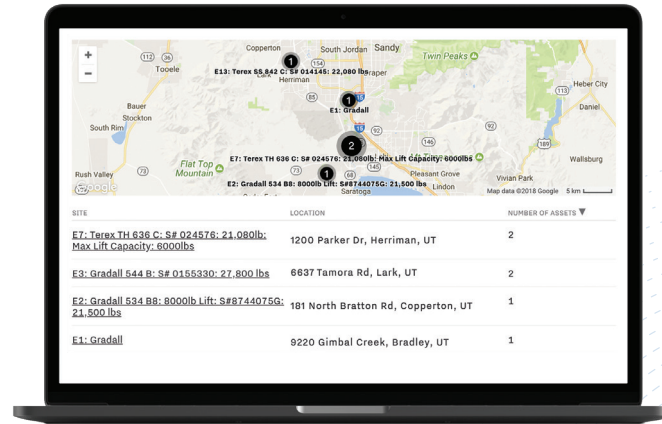
Unpowered Asset Tracker

Weatherproof trackers provide automated inventory reporting and locate valuable mobile assets in real time in cases of theft.



END-TO-END VISIBILITY

From yellow iron to white
fleets, always know where
your assets are.





Eliminate Yard Hunts

Never call around looking for your equipment again. Real-time GPS tracking makes it possible to instantly locate light- and heavy-duty vehicles and specialized equipment. Whether you need to know where a skid steer is deployed or where to send a mechanic to fix a flat tire, Samsara gives you complete visibility into what your fleet is doing at any moment.



When a cement truck breaks down, our team typically has 60 minutes to respond before we lose the load. Samsara allows us to immediately dispatch maintenance and save the delivery.”

JIM DROUIN, *Maintenance Supervisor*
Alvin J. Coleman & Son

CORE BUILDERS

Asset Dormancy Mar 26, 3:31 PM - Apr 2, 3:31 PM ⌵

ASSET	LOCATION	DORMANT (DAYS) ▼	UTILIZATION
E2: Gradall 534 B8: 8000lb Lift: S#8744076G: 21,500 lbs	Eagle Mountain, UT	7+	-
E8: Skytrak 10054: S#	E3: Gradall 544 B: S# 0156330: 27,800 lbs	6	-
E7: Terex TH 636 C: S# 024576: 21,080lb: Max Lift Capacity: 6000lbs	3.6 mi WNW Lehi, UT		1
E3: Gradall 544 B: S# 0155330: 27,800 lbs	E16: 1998 Pettibone C- 8000: S#7087: 23,370lbs	6	1
E12: Skytrak 10042: S#F1793_1794: 10,000lb Lift Capacity	Herriman, UT	6	1

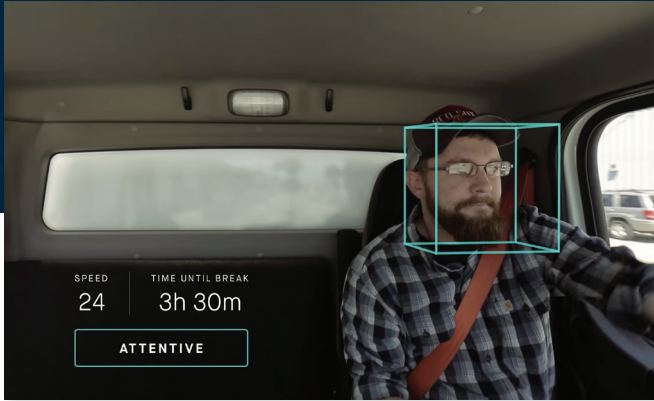
Maximize Asset Utilization

Identify idle and heavily used assets with automated dormancy and equipment reports, then grow your business by redeploying underutilized assets to areas with higher demand.



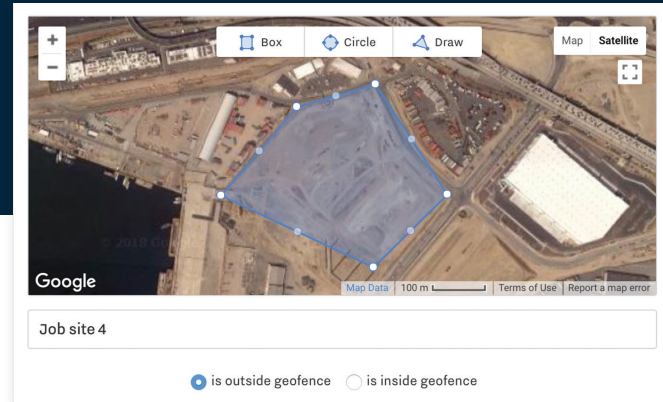
Improve Job Costing and Billing

Time on Site and Billing Reports show customers that the hours billed match the hours worked. By tracking engine runtime and power takeoff, you can better estimate the cost of upcoming projects.



Promote Driver Safety

HD dash cams and AI-powered distracted driving detection capture footage of critical events, increasing driver safety and lowering accident-related costs. Video evidence lets you exonerate drivers and expedite insurance claims.



Protect Valuable Equipment

Customizable geofences alert you instantly if assets move outside of your approved locations, helping you react quickly in cases of theft or unauthorized equipment use.

Trusted by fleets of all sizes





Ghilotti Bros. and Samsara have forged a strong relationship, built on their shared commitment to safety best practices and operational efficiency.



Mike Ghilotti, President & Owner, Ghilotti Bros., Inc.



samsara

samsara.com/free-trial
