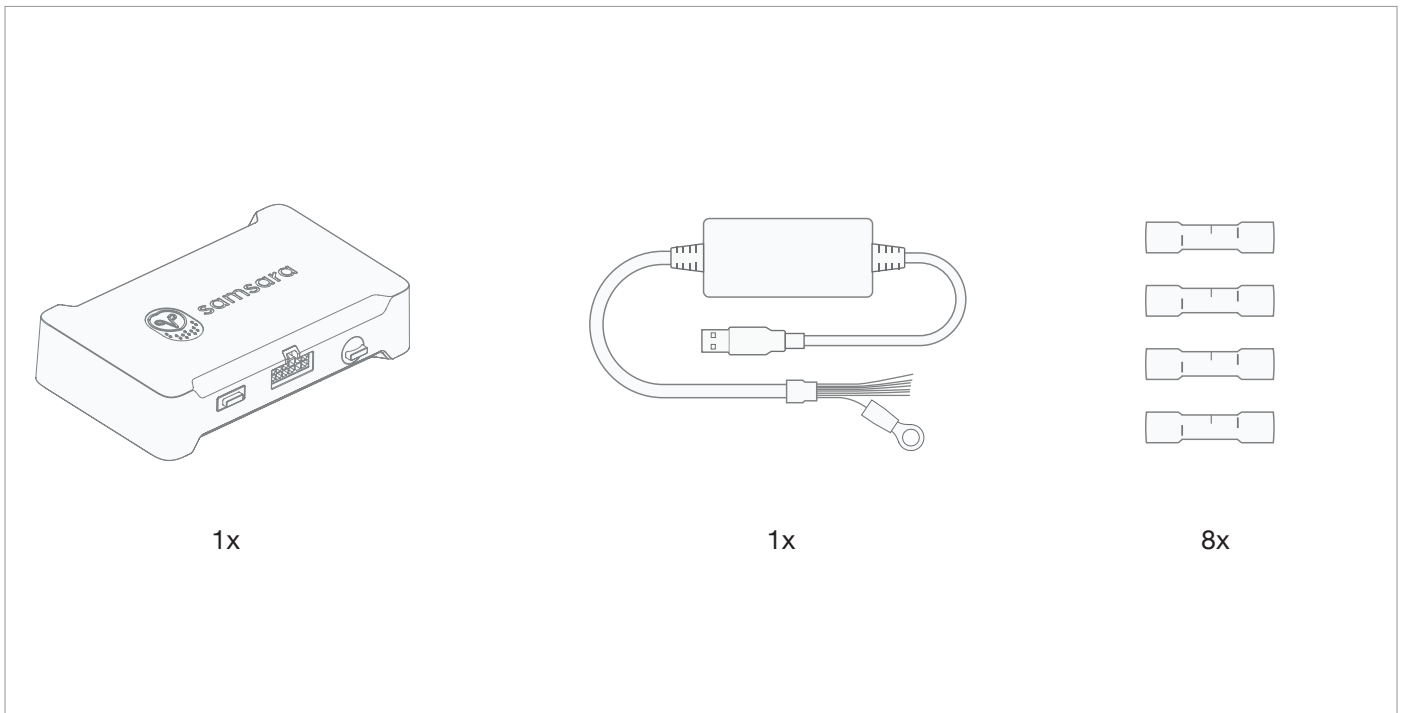


INSTALL GUIDE – AUXILIARY INPUT HUB FOR VG34 VEHICLE GATEWAY

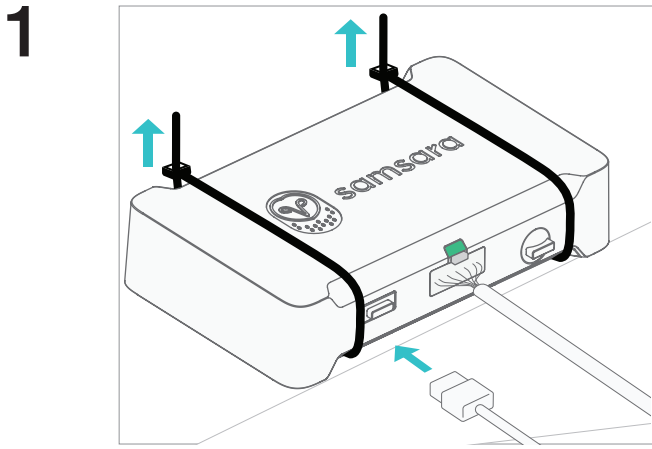


INSTALL TIPS

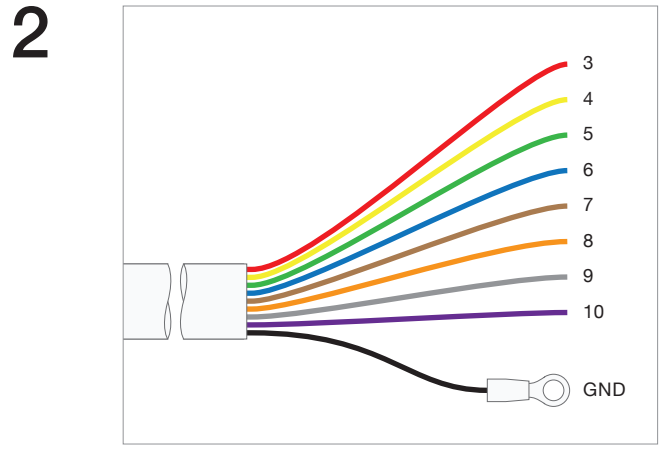
Go to samsara.com/aux-expander-setup to access additional setup information.

Suggested Tools

- Wire Stripper
- Butt Connector Crimper



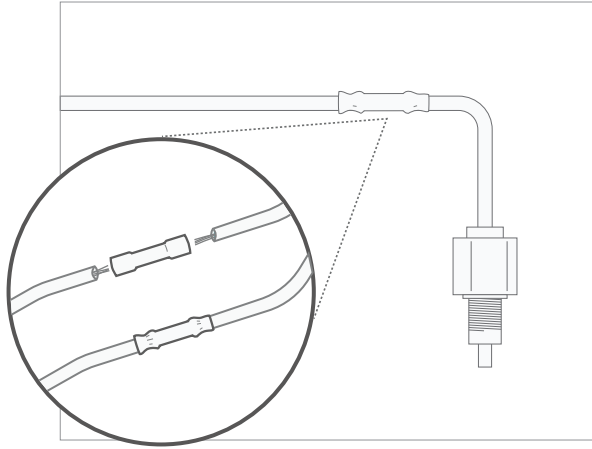
EN Plug the USB into the vehicle gateway.



EN Please reference the table below for input information. Samsara highly recommends using the ground ring for install.

Aux Line Number	Wire Color
1	N/A Local to VG34
2	N/A Local to VG34
3	Red
4	Yellow
5	Green
6	Blue
7	Brown
8	Orange
9	Gray
10	Purple
GND	Black

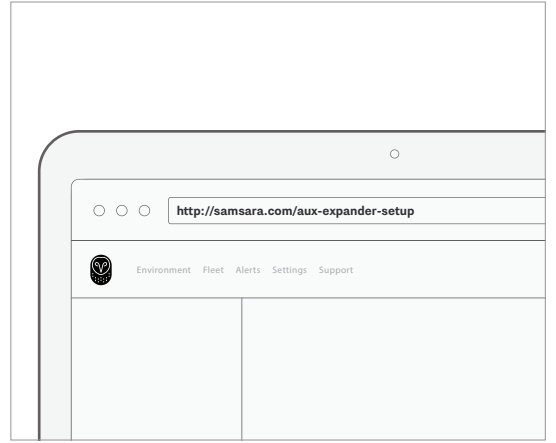
3



EN

Use a butt splice to connect aux wires to sensor inputs that you want to monitor.

4



EN

Please go to Samsara.com/aux-expander-setup for information on how to enable the AUX line in the Samsara dashboard.