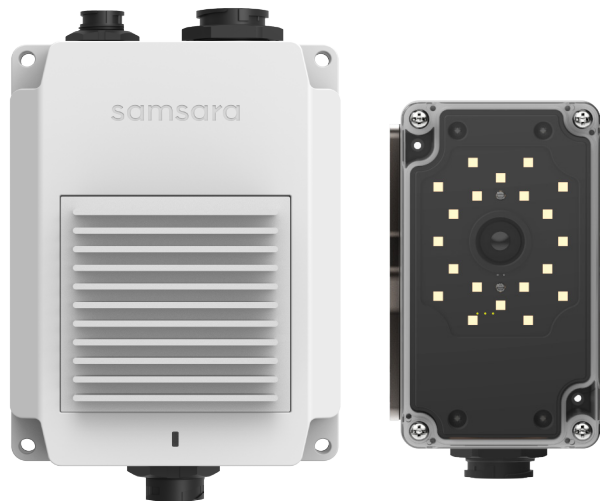




# VS2 Series Vision System

## Datasheet



### OVERVIEW

---

The Samsara VS2 machine vision system offers a complete solution for automated quality control. Integrated hardware and cloud-based software simplifies setup, allowing you to solve key production and quality challenges for any industries. Increase quality and yield, reduce rework and scrap, and improve safety and compliance with configurable, code-free tools.

### HIGHLIGHTS

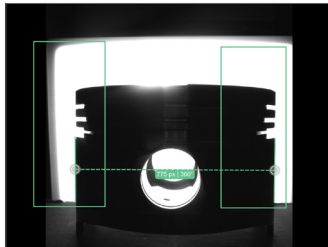
---

|                    |   |
|--------------------|---|
| Centrally managed  | Securely access, view, and manage your entire inspection process from any device.                         |
| Traceability       | Track and trace out of the box with real-time data and automatic logging.                                 |
| Built-in analytics | Instantly review quality metrics and production data with automatically generated production run reports. |
| Easy setup         | Share inspection programs across lines and set up HMIs in seconds.  |

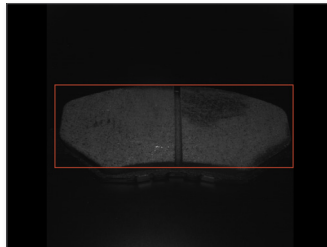
# Powerful vision applications across industries

Samsara Machine Vision offers powerful, intuitive inspection capabilities for any industry. Whether you're new to Machine Vision or a seasoned veteran, get started in seconds with easy-to-use tools that can be applied to hundreds of use cases. Seamlessly monitor, configure, and update your entire inspection process with our central dashboard.

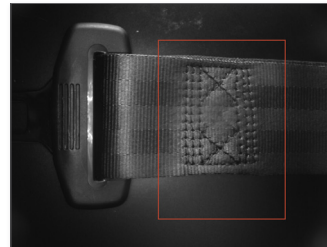
## AUTOMOTIVE



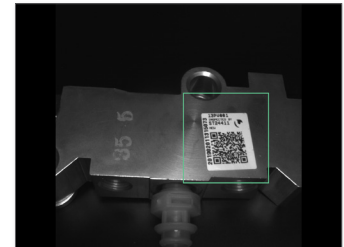
PART DIMENSIONING



DEFECT DETECTION

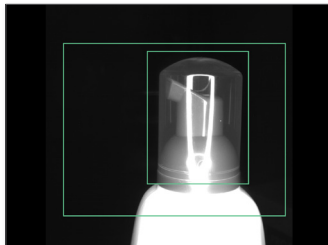


ASSEMBLY VERIFICATION

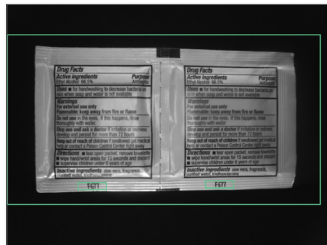


TRACK & TRACE

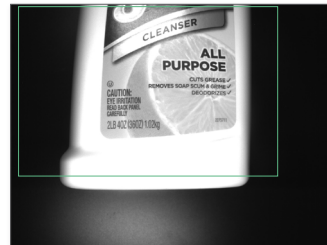
## CONSUMER GOODS



ASSEMBLY VERIFICATION



LOT CODE VERIFICATION



LABEL VERIFICATION



FILL LEVEL INSPECTION

## FOOD & BEVERAGE



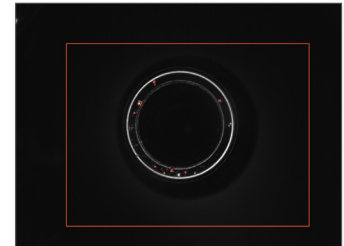
CAP PLACEMENT



EXPIRATION DATE

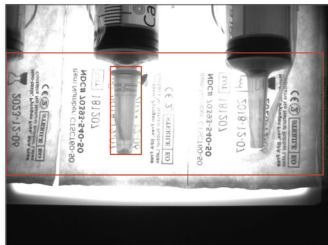


BARCODE READING

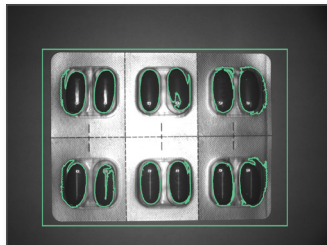


PRODUCT QUALITY

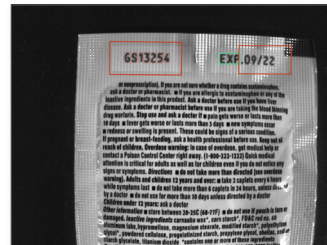
## PHARMACEUTICALS



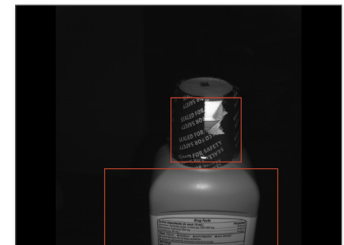
ASSEMBLY VERIFICATION



PILL COUNT



EXPIRATION & LOT CODE



SEAL INSPECTION

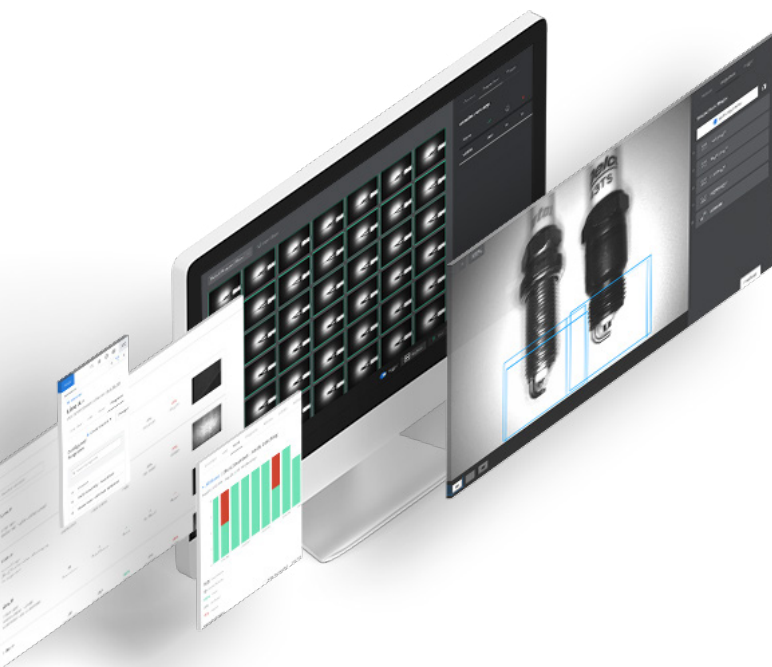


## Full visibility into every run

Whether you're on site or on the go, instantly review quality metrics with production run data. Samsara analyzes, labels, and tags images of every item and provides a production report for every run.

## Seamless changeovers

VS2s integrate with existing production systems, PLCs, and historians to allow automatic product changeovers with minimal changes to existing operator processes. The built-in HMI Recipe Manager runs on any tablet and allows operators to quickly choose which product to run and identify current run status.



## One kit wonder

Our Machine Vision solution kit offers dozens of inspection capabilities out of the box. With an easy-to-use dashboard, new programs can be configured and shared in just a few clicks – all without ever going on site. And because every camera is connected to the cloud, you can easily share common programs between lines with Cloud Sync.

# VS2 Series Vision System Datasheet

## ENCLOSURE

---

|                         |  |
|-------------------------|--|
| Dimensions (W x H x D)  | Camera: 126 × 71 × 58mm (5.0 × 2.8 × 2.3 inches)<br>Controller: 105 × 152 × 48mm (4.1 × 6.0 × 1.9 inches)<br>Cables (included): 5m |
| Ambient Temperature     | 0° to 45°C   |
| Material                | Controller: UV-stabilized polycarbonate, Aluminium<br>Mounting brackets: Powder-coated/corrosion-resistant stainless steel         |
| Ingress Protection      | IP67 (Camera and Controller and cable connections are all washdown-rated)  |
| Industrial Connectors   | Power/IO: Bayonet-locking, IP67<br>Camera: Bayonet-locking, IP67<br>Ethernet: RJ45 with included IP67 waterproof cap               |
| Integrated Illumination | White LEDs (5000K, integrated/internal)  |
| External Illumination   | External lighting options are available; contact Samsara for more information  |

## IMAGING SENSOR

---

|                    |   |
|--------------------|---|
| Sensor Type        | 1/3" monochrome CMOS with global shutter  |
| Lens Type          | Autofocus lens  |
| Lens Lengths       | 4.2mm, 6mm, 8mm, 12mm, 16mm   |
| Resolution         | 1.2 megapixels  |
| Acquisition Rate   | 20 frames per second  |
| Exposure Time      | 1/10,000 to 1/100 second  |
| Installed Distance | 6" to 11" (152 mm to 280mm)   |
| Field of View      | 145 × 105mm at 152mm (5.7 × 4.1" at 6")<br>243 × 185mm at 280mm (9.6 × 7.3" at 11") |

# VS2 Series Vision System Datasheet

## POWER, INPUTS, AND OUTPUTS

---

|                  |  |
|------------------|--|
| Power            | 10V to 17V, 3A   |
| Triggering Input | NPN/PNP supported (no software configuration required)                             |
| Reject Output    | MNPN/PNP supported (no software configuration required)                            |
| LAN Ethernet     | 2 x RJ45, 10/100/1000 Mbps IEEE 802.3u 1000BASE-T Fast Ethernet                    |
| PLC & API        | Modbus TCP, HTTP via REST API<br><i>See VS2 integration guide for more details</i> |

## CONNECTIVITY, TRACEABILITY, AND QUALITY MANGEMENT

---

|                        |   |
|------------------------|---|
| Ethernet               | 110/100 Mbps (10/100 Base-T)  |
| Wi-Fi                  | Wi-Fi 802.11 b/g/n  |
| Traceability Dashboard | Included  |
| Image History          | 2/sec maximum across all conditions (pass/fail); unlimited storage  |
| Quality Analysis       | All runs, match rate, and statistics are traceable to individual products   |
| Remote Access          | Integrated, secure live monitoring and remote configuration with no additional hardware   |
| Data Security          | All dashboard connectivity secured out-of-the-box via SSL with 256-bit AES encryption (military-grade)  |
| USB Cable              | 5ft cable included (for camera to controller connectivity)<br>Note: This is a high-performance cable. For optimal performance, we do not recommend using other USB cables. Please factor in cable length when considering installation options. |
| Supported Browsers     | Google Chrome (For optimal performance, we do not recommend using other browsers).  |

## BARCODE READING AND INSPECTION

---

|               |   |
|---------------|---|
| Barcode Types | UPC-A, UPC-E, EAN-8, EAN-13, EAN-2, EAN-5 Add-On, Interleaved-Two-of-Five (ITF), Code 32 Italian Pharmacode, Code 39, Code 93, Code 128, Code 25, Code 11, DotCode, MSI Plessey, GS1 Databar, QR Code, Micro QR Code, Data Matrix, PDF417, MicroPDF417, Codabar, Aztec Code, MaxiCode, GS1 Composite Codes, KIX, RM4SCC |
|---------------|---|