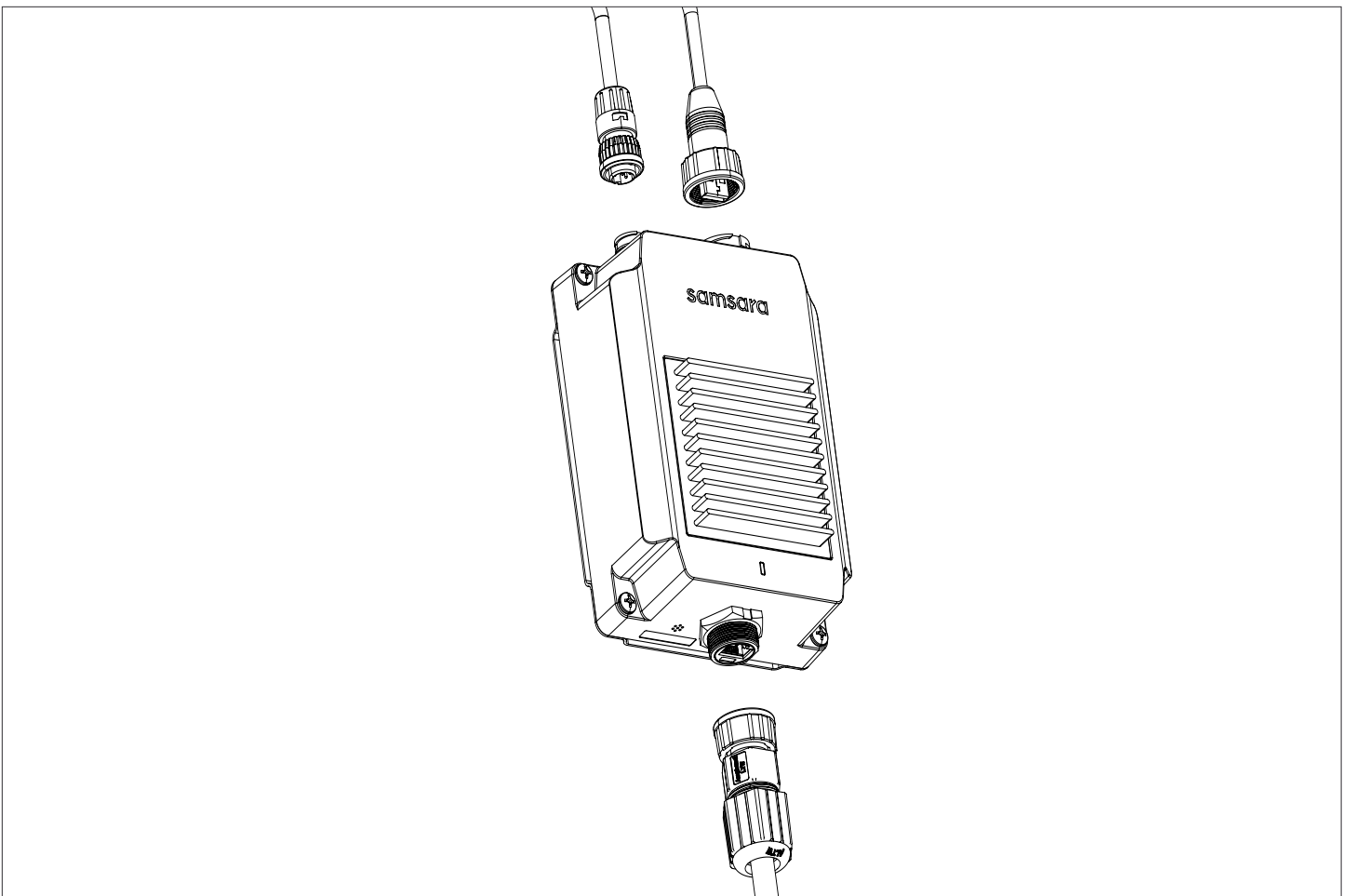


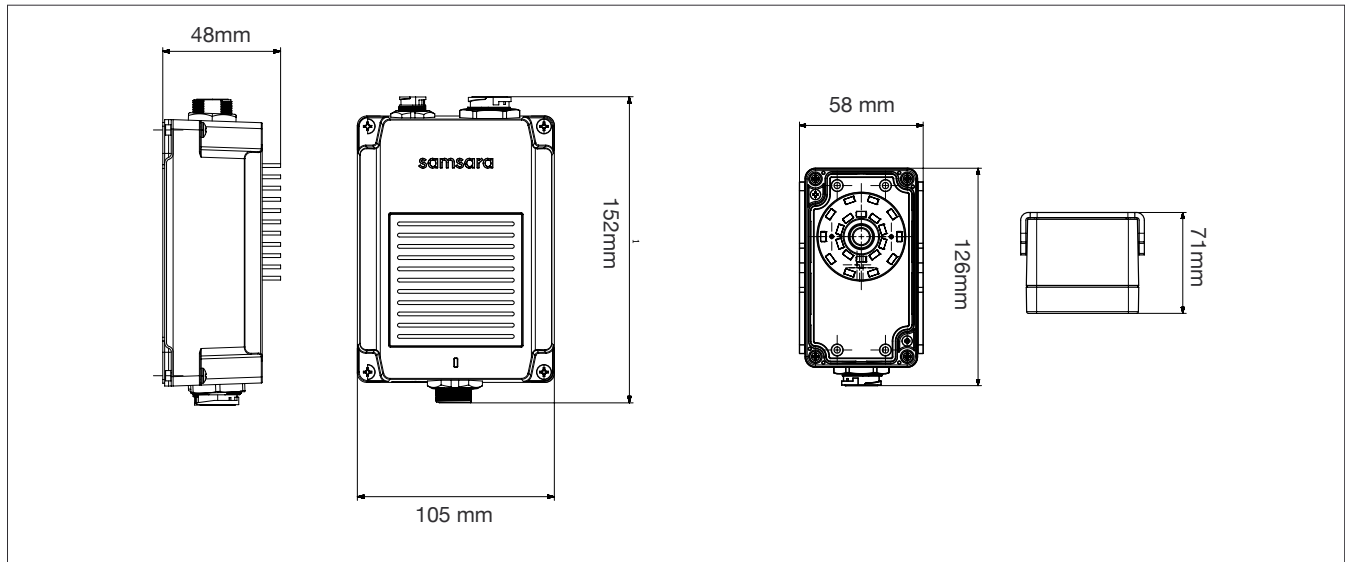
Machine Vision System

QUICK INSTALL REFERENCE GUIDE



Technical Specifications

Enclosure



Dimensions	Controller: 105 x 152 x 48mm (4.1 x 6.0 x 1.9 inches) Camera: 126 x 71 x 58mm (5.0 x 2.8 x 2.3 inches)
Materials	Controller: UV-stabilized polycarbonate, aluminum Mounting brackets: Powder-coated, corrosion-resistant stainless steel
Ingress protection	IP67, camera, controller, and cable connections are all washdown-rated
Industrial connectors	Power/IO, Camera: Bayonet-locking, IP67 Ethernet: RJ45 with included waterproof cap
Integrated illumination	White LEDs (5000K)

Imaging sensor

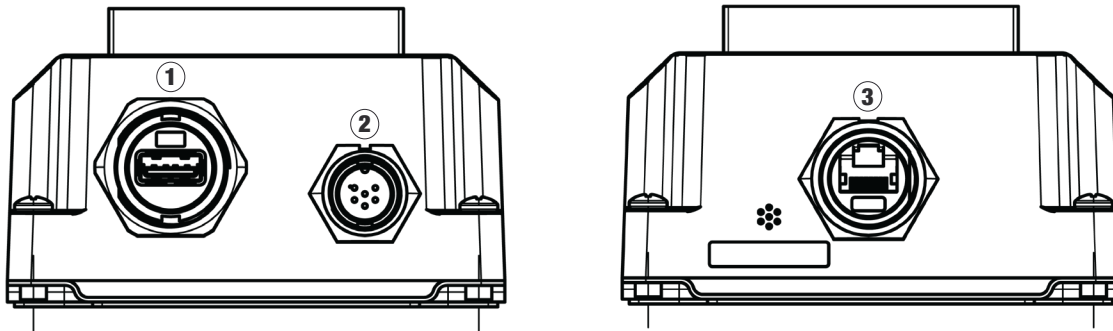
Working distance	152 to 280mm (6 to 11 inches)
Field of view	145 x 105mm at 152mm (5.7 x 4.1 inches at 6 inches) 243 x 185mm at 280mm (9.6 x 7.3 inches at 11 inches)

Power

Power	10 to 17V
Triggering input	NPN/PNP supported
Triggering voltage	ON: 10 to 30V DC OFF: 0 to 3V DC
Output	NPN/PNP supported
Output voltage	30V DC maximum through external load
Output current	100mA maximum sink current
External illumination	External illumination requires 24V power, contact Samsara for options

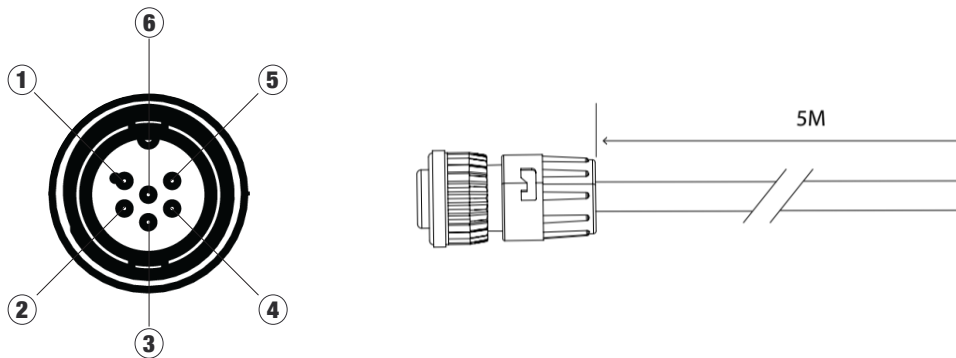
Connectors

Controller connectors



Connector	Name	Function
1	Camera	Connects the controller to the camera.
2	Power/IO	Connects the breakout cable which provides power as well as connections the input trigger and output.
3	Ethernet	Connects the controller to the network.

Breakout cable pin-out



Pin	Signal Name	Wire Color
1	Power	Red
2	Ground	Black
3	Input Trigger	Green
4	Input Common	White
5	Output	Blue
6	Output Common	Gray

Connecting input and output lines

Connect the trigger input

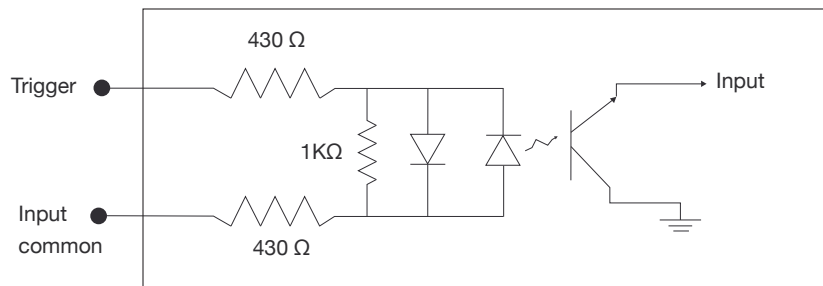
The VS2 features one trigger input that can be configured to trigger from either an NPN or PNP device.

Triggering from an NPN device

Connect the Input common wire (white) to +10-30VDC and the Trigger wire (green) to the output of the photo eye.

Triggering from a PNP device

Connect the Input common wire (white) to +0-3VDC and the Trigger wire (green) to the output of the photo eye.



Trigger input wiring diagram

Connect the output

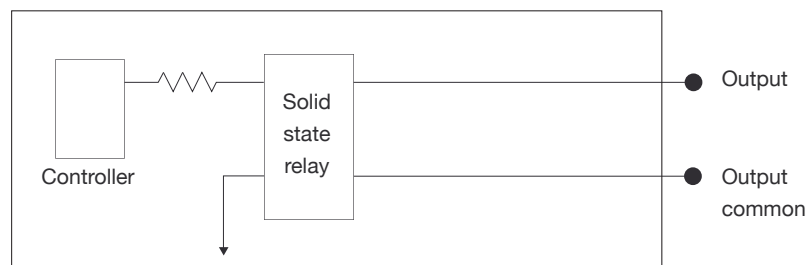
The VS2 features an output that can be configured as an NPN or PNP line.

Connect for an NPN line

Connect the Output common wire (gray) to the negative supply voltage and connect the Output wire (blue) to the desired device.

Connect for a PNP line

Connect Output Common wire (gray) to the positive supply voltage and connect the Output wire (blue) to the desired device.



Output wiring diagram