

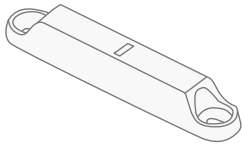


samsara

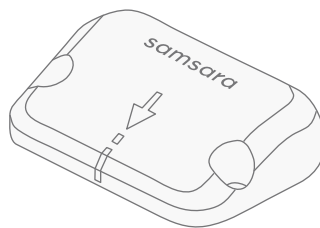
Door Monitor - DM11

INSTALL GUIDE

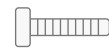
What's included:



1x Magnet



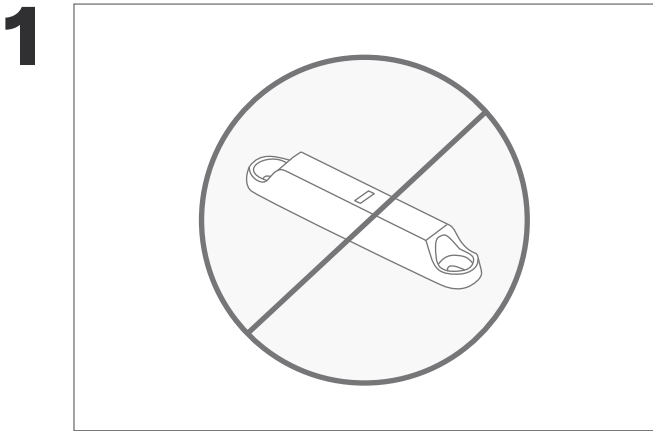
1x Sensor
(adhesive attached)



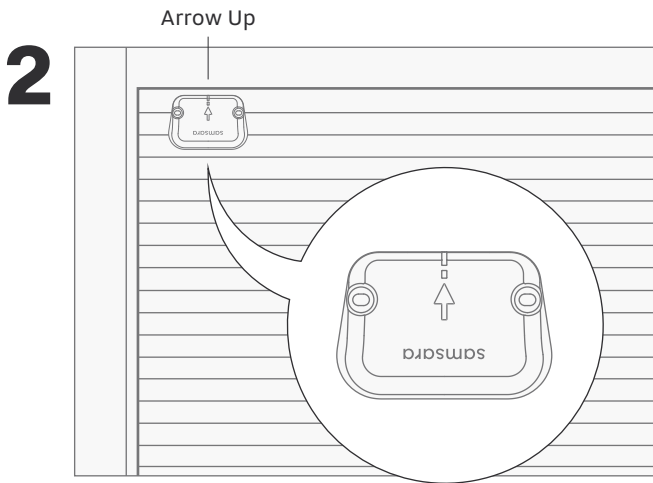
4x Screws

Questions? samsara.com/support

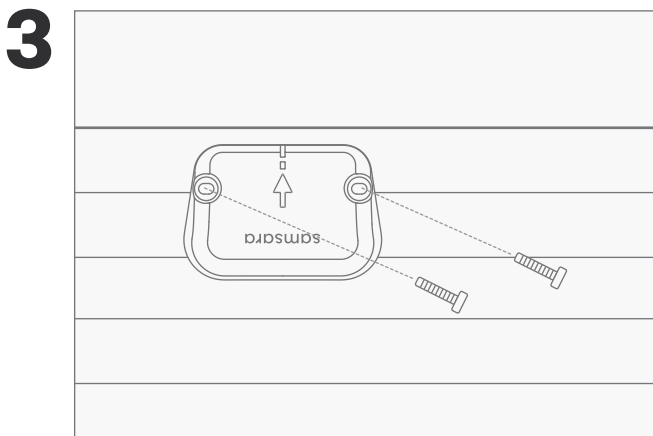
Roll-Up Door



Discard magnet.

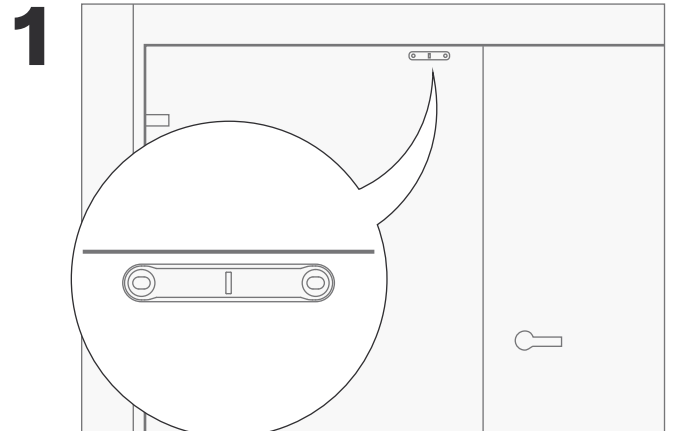


Place sensor on inside of door, as high as possible.

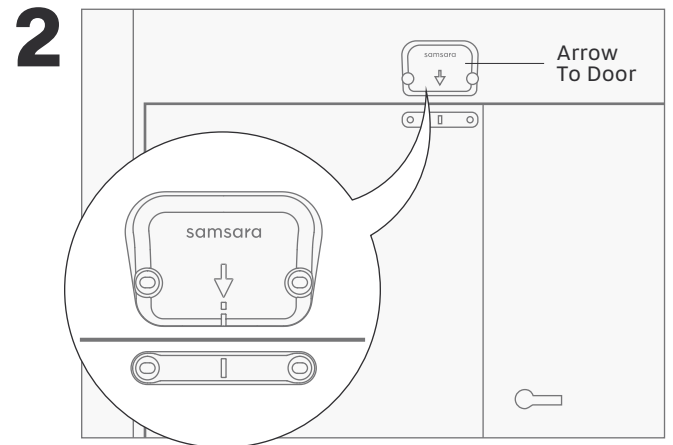


Secure with included adhesive. Screw if desired.

Swing Door

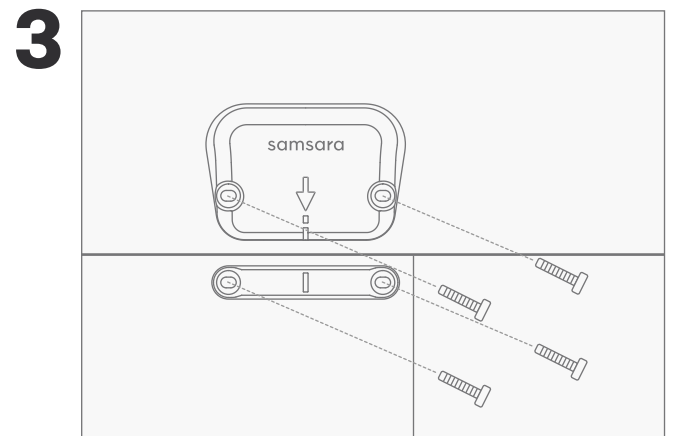


Place magnet on edge of door.



Place sensor on wall, arrow toward door.

Note: Max distance between sensor and magnet is 1/2 inch. Light blinks when aligned.



Secure with included adhesive. Screw if desired.

* Note: If using your own screws, make sure they're non-magnetic.