

Environmental Monitor

INSTALL GUIDE

LITHIUM BATTERY PRECAUTIONS

Do not open battery, dispose of in fire, expose contents to water, recharge, or install backwards.

Do not exceed battery manufacturer specifications for temperature or pressure.

Do not replace with an incorrect battery type which may defeat product safeguards.

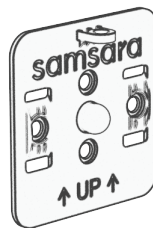
What you'll need:



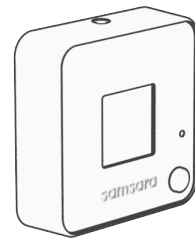
1x



2x



1x

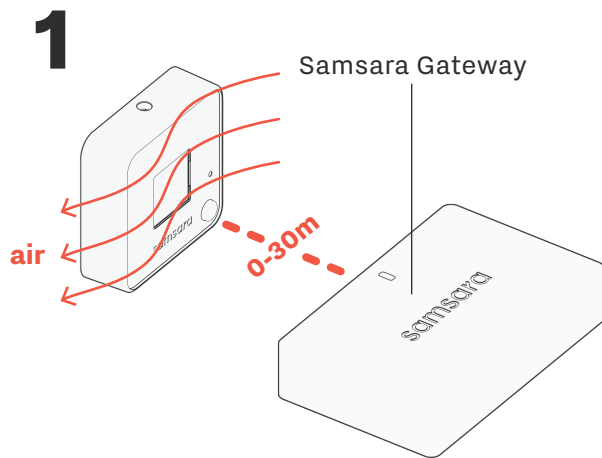


1x

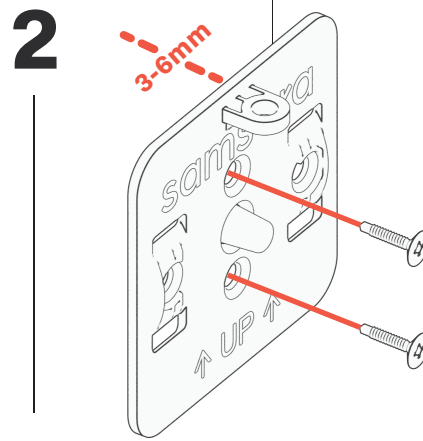
Note: this equipment is designed for installation within 2 meters of the area to be monitored.

IFT: #RCPSA0122-4231

La operación de este equipo está sujeta a las siguientes dos condiciones: (1) es posible que este equipo o dispositivo no cause interferencia perjudicial y (2) este equipo o dispositivo debe aceptar cualquier interferencia, incluyendo la que pueda causar su operación no deseada.



*For optimal performance, place the device in an area with lateral airflow.



*For optimal performance, mount the device at least 3mm away from the wall using washers.

