



THE SAMSARA DIFFERENCE

5 Ways Samsara is Changing Fleet Management



01 ALL-IN-ONE PLATFORM

Your time is valuable. Rather than use one platform for tracking, another for routing, and another for HOS logs, we bring that all together into one easy-to-use system.



If it weren't for Samsara I'd probably have at least four vendors to cover all the things it's doing for us...it just works."

— Jim Hoss, VP of Operations at Cash-Wa Distributing

02

SUPPORT FOR YOUR FLEET

Whatever the road brings, we want to deliver the best experience possible. That's why we have 24/7 US-based support. With Samsara you talk to real people—not robots. Easily get a hold of us via phone, email, or live chat.



NEXT PAGE →

03

PLUG-AND-PLAY INSTALLATION

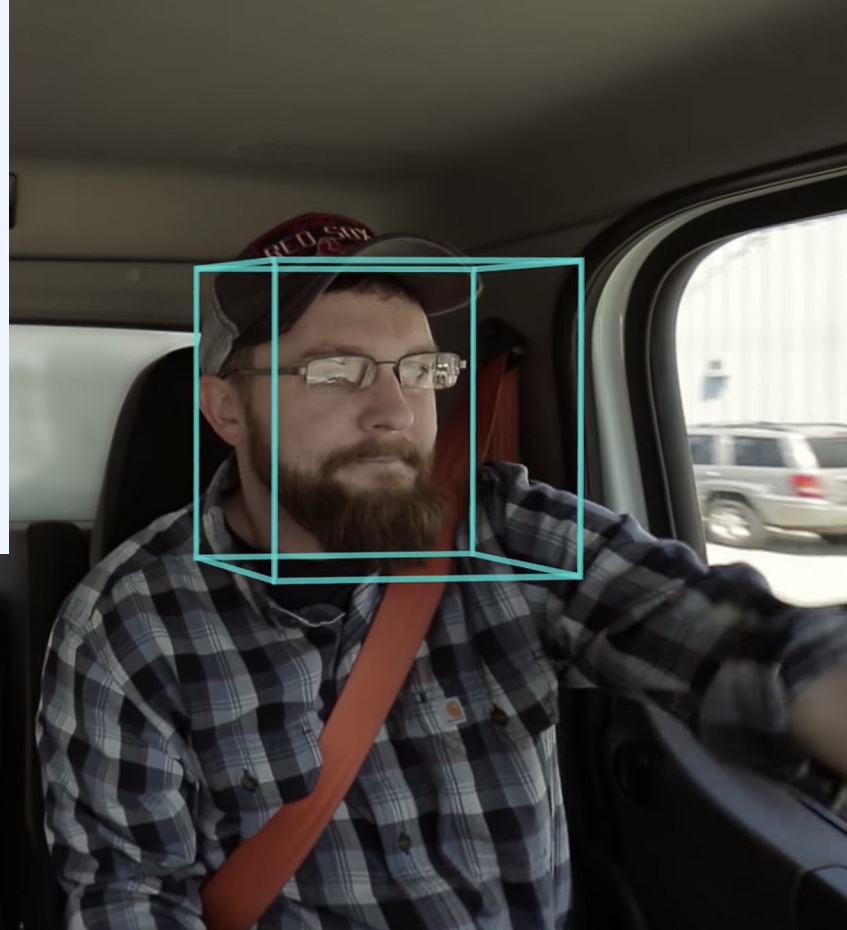
We want to keep your fleet on the move. Samsara is designed to be easy to manage and intuitive to use. Our simple and straightforward products can be up and running in under 20 minutes per vehicle.



04

ADVANCED ANALYTICS TO PROTECT YOUR DRIVERS

Protecting your drivers and your business is our priority. We offer cutting-edge AI Dash Cams that understand what's happening on the road and assist drivers in real time to take your fleet safety to the next level.



SPEED

24

TIME UNTIL BREAK

3h 30m

ATTENTIVE



05

CUSTOMER-DRIVEN INNOVATION

We want to give you every edge possible in your business so we refuse to stop innovating. Our team listens to customer requests and leverages the latest technologies to release dozens of incredible new products every year—from live location sharing to taking your cab paperless.