

SAMSARA MACHINE VISION FOR

# Automotive

The Leading Platform for Connected Operations



## SAMSARA FACTS

10,000+ customers  
worldwide

200,000 new devices  
added annually

Offices in  
San Francisco,  
San Jose, Atlanta,  
and London



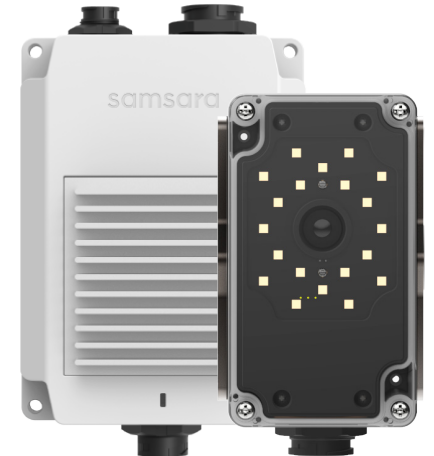
samsara



# A Complete Machine Vision Platform for Automotive

Rising labor costs and gaps in the workforce are driving more automotive manufacturers to turn to automation to lower production costs. At the same time, actionable data has become increasingly important for improving yield and efficiency.

While machine vision systems can help solve key production and quality challenges for automotive manufacturers, they have historically been difficult to use and maintain. Samsara's VS2 series simplifies the machine vision experience by combining powerful hardware with a truly intuitive user interface. Coupled with an integrated traceability database and an array of flexible inspection tools, the VS2 series offers a complete solution for automated product inspection in the automotive space.



## QUALITY MANAGEMENT

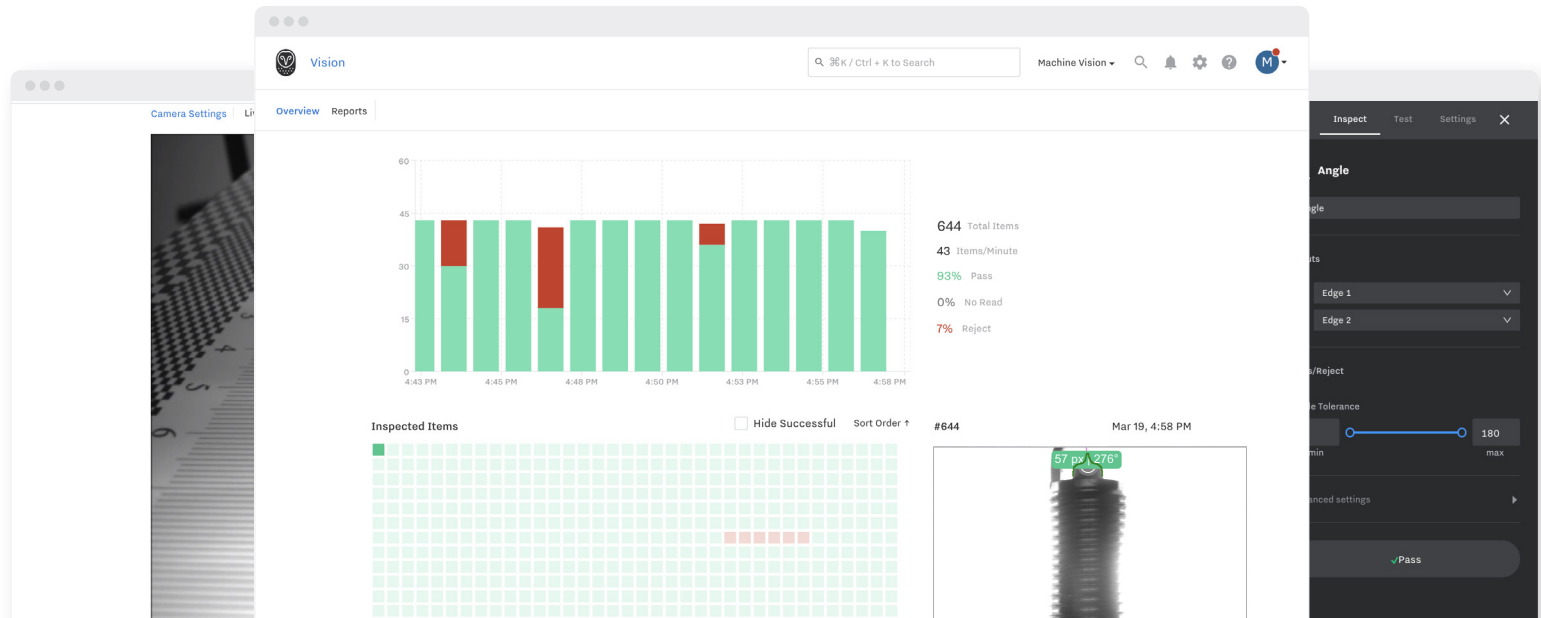
Reliable inspections of every single component improves product quality, operational speed, and production yield.

## OPERATIONAL EFFICIENCY

Real-time defect alerts and integration with automated systems help catch defects sooner, reducing rework and scrap costs.

## BUILT-IN COMPLIANCE

Out-of-the box traceability reporting means inspection results are automatically collected for easy, verifiable compliance and tracking.



## APPLICATIONS

# Solve key business challenges

---

### **DIMENSIONING**

Verify that every part conforms to strict tolerances using measurement tools. Gauge critical dimensions and placement.

### **ASSEMBLY VERIFICATION**

Verify that every part is assembled correctly over large areas. Confirm that every component is present and aligned.

### **PRODUCT QUALITY**

Confirm that products are consistent in appearance. Ensure they are free of dents, scratches, and any other defects that could compromise safety.

### **TRACEABILITY**

Read and verify the accuracy of 1D and 2D barcodes, text, and numbers to create traceability for all components, from wheels to engine blocks.

## The Samsara advantage

### ➤ **FASTER SETUP**

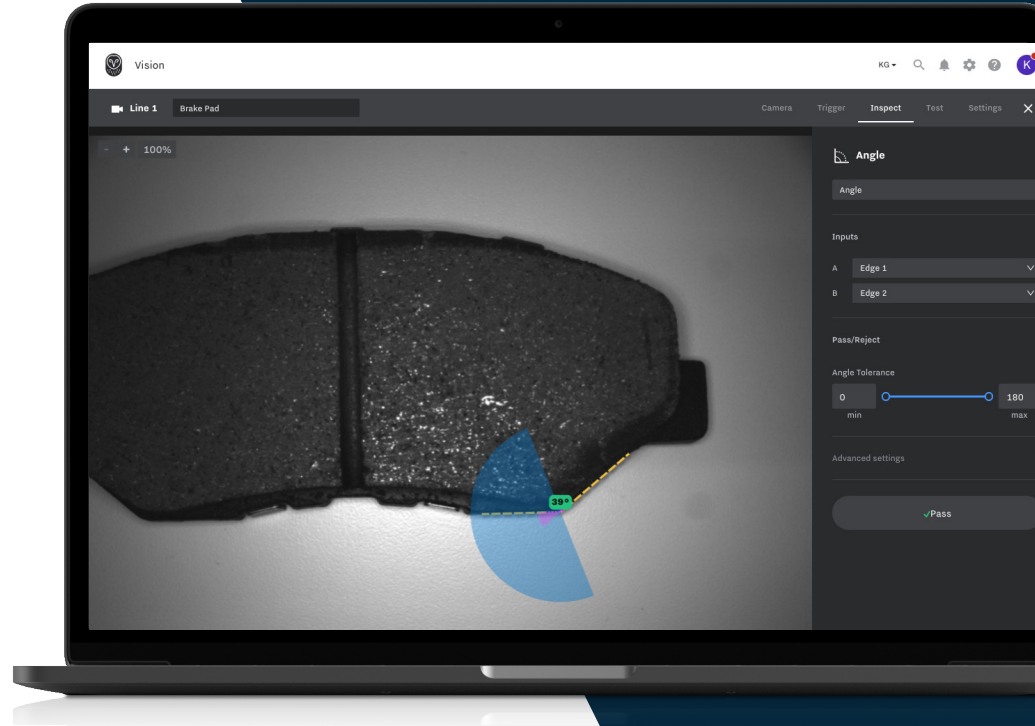
Start inspecting your products with configurable, code-free tools.

### ➤ **ANYWHERE, ANYTIME**

Seamlessly manage your entire inspection process with our central dashboard.

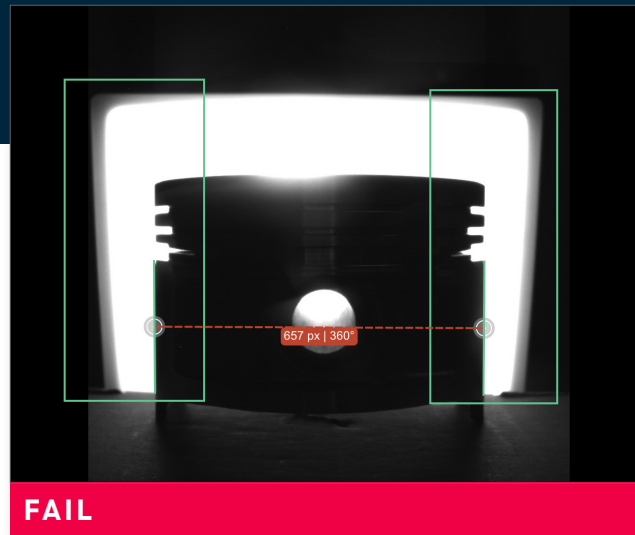
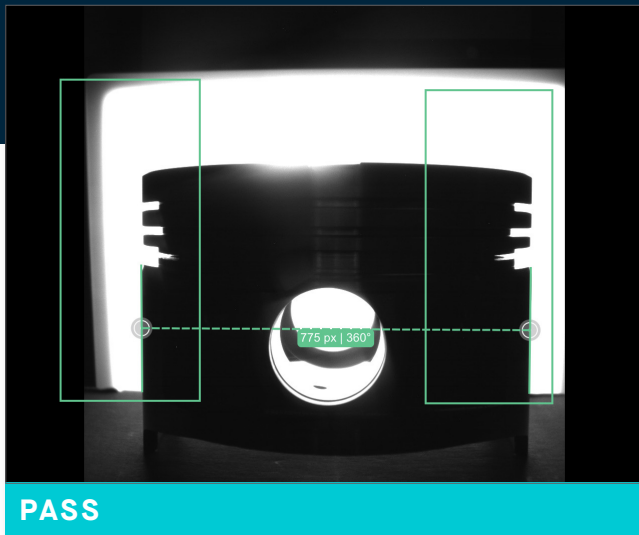
### ➤ **TOTAL VISIBILITY**

Analyze real-time and historical production data with integrated traceability.



# Part Dimensioning

Verify that automotive parts, like the piston shown here, are the correct shape and dimensions.



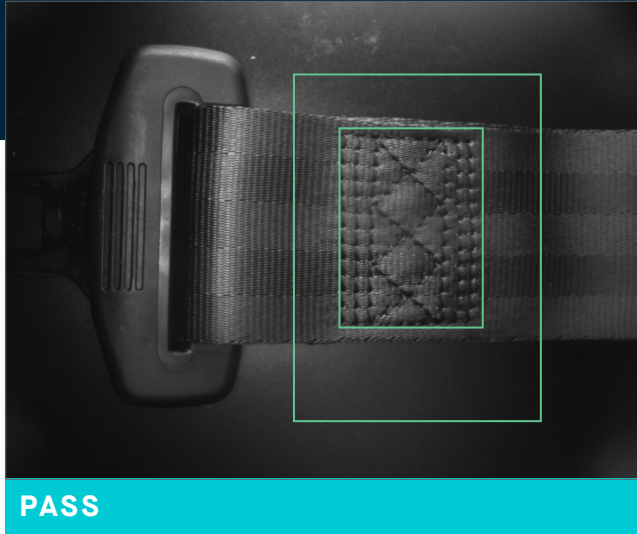
# Quality and Appearance

Ensure that all components, like these brake pads, are produced without flaws. Detect the presence of any defects, dents, scratches, wear, and discoloration.



# Assembly Verification

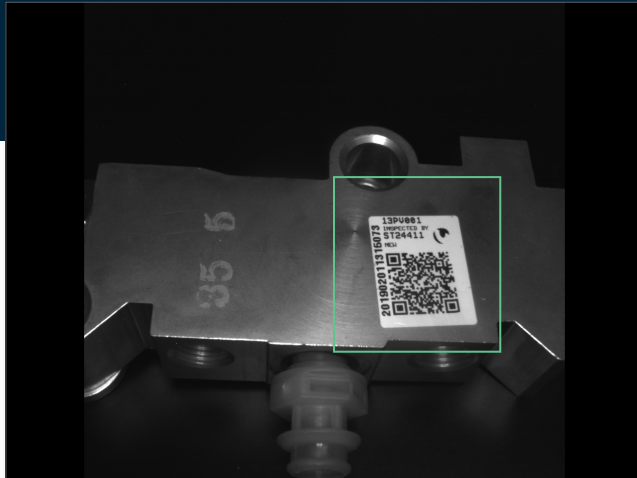
Confirm that all pieces and parts are assembled to specifications with no missing components.



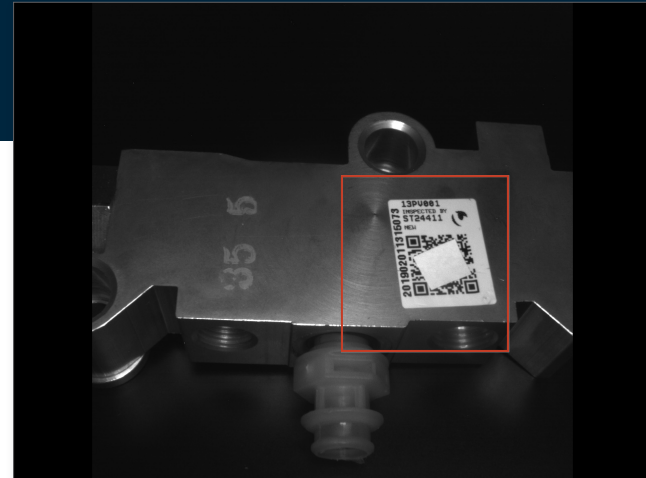


# Component Traceability

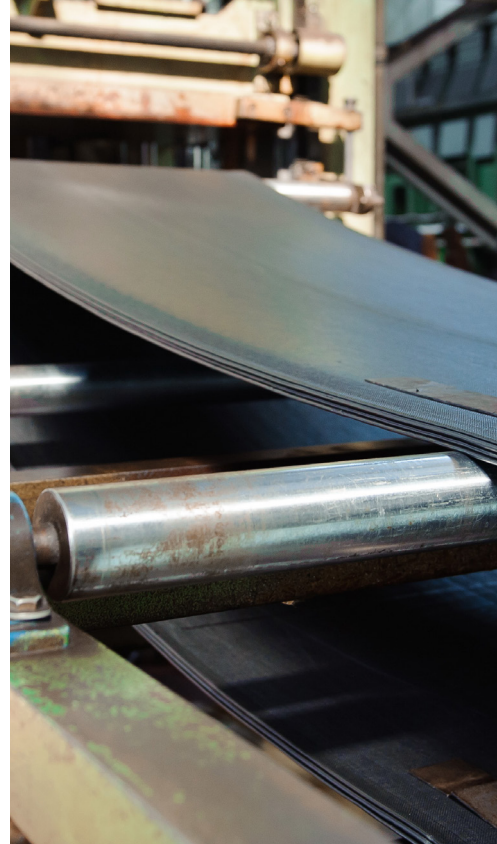
Analyze every product by verifying and recording barcode information in the dashboard.

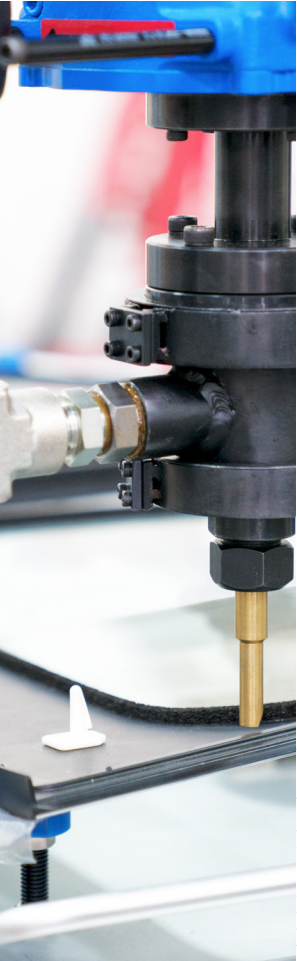


# PASS



**FAIL**





## APPLICATIONS

# Tools for every inspection

- Glue Beads
- Circuit Coating
- Injection Moulding
- Harness Construction
- Tire Assembly
- Wheel Fasteners
- Airbags
- Brake Pads
- Brake Valves
- Part Dimensions
- Foreign Particles
- Weld Quality
- Thread Defects
- Track & Trace
- Subassembly Construction



samsara

[samsara.com/industrial](https://samsara.com/industrial)